



Hotels

**AN OASIS IN THE MIDDLE  
OF YOUR ADVENTURE**

# A HOTEL FOR EVERY STYLE AND BUDGET

From full-service hotels with a broad range of amenities to affordable accommodations featuring value-oriented standard rooms and suites, all of Universal Orlando's hotels offer exclusive theme park benefits. It's the best way to experience Universal.

The **Signature Collection** offers expansive, full-service amenities, exceptional dining, distinguished service, immersive theming, and an array of the most exclusive theme park benefits.

Universal's **Prime Value Hotels** are the sweet spot, with a mix of services and amenities made for comfort and affordability. Guests at these hotels enjoy thoughtful, resort-style conveniences, an array of fast-casual dining options, and exclusive theme park benefits.

Universal's **Value Inns and Suites** are the fun, affordable option offering rooms as well as spacious suites with kitchenettes. With quick-service dining, resort-style amenities and convenient service, these hotels offer guests exactly what they need, including exclusive theme park benefits.



## EXCLUSIVE BENEFITS ONLY FOR UNIVERSAL ORLANDO HOTEL GUESTS

### EARLY PARK ADMISSION

Breeze into the parks before regular guests.\*

(Valid theme park admission required; select attractions.)

### UNIVERSAL EXPRESS UNLIMITED RIDE ACCESS^

Skip the regular lines to get more rides, more often.

(Separate theme park admission required. Not Valid at Universal Volcano Bay or at Universal Epic Universe. Restrictions apply.)

### FREE WATER TAXIS<sup>1</sup> & SHUTTLES

for an easy hop to and from your hotel.

(<sup>1</sup>Water taxi not available for Universal Volcano Bay or Universal Epic Universe.)

### RESORT-WIDE CHARGING PRIVILEGES

Use your room key across Universal.

### COMPLIMENTARY MERCHANDISE DELIVERY

from Universal shops to your hotel.

### PRIORITY SEATING

at most Universal restaurants.  
(Select hotels.)

### DEDICATED WALKING PATH TO VOLCANO BAY

Stay steps away from the thrills and relaxation.

(Select hotels.)

\*,^ See back cover for details

**EXCLUSIVE THEME  
PARK BENEFITS**

**EARLY PARK  
ADMISSION\***  
Separate theme park admission  
required; select attractions.

**FREE  
SHUTTLES**

**RESORT-WIDE  
CHARGING  
PRIVILEGES**

**FREE  
MERCHANDISE  
DELIVERY**

**DEDICATED ENTRYWAY TO  
UNIVERSAL EPIC UNIVERSE**

ARTIST CONCEPTUAL RENDERING

# UNIVERSAL HELIOS GRAND HOTEL

## SIGNATURE COLLECTION

\$\$\$\$

Universal Helios Grand Hotel, a Loews Hotel, is a majestic escape with a casual, elegant, Mediterranean-inspired feel throughout.

**IT IS LOCATED IN UNIVERSAL  
EPIC UNIVERSE AND HAS A  
DEDICATED ENTRANCE TO  
THE PARK, ALSO OPENING  
MAY 22, 2025.**

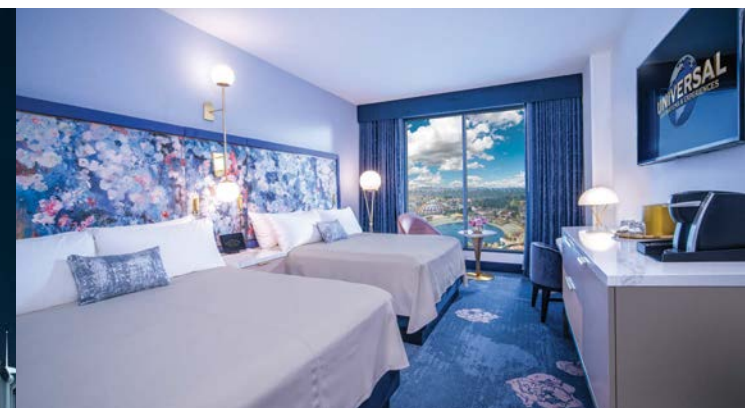
(Separate theme park admission required for park entry.)

## Accommodations

- 500 rooms and suites
- Standard rooms feature two queen beds that sleep up to five with rollaway or one king bed that sleeps up to three with rollaway.††
- Select from multiple suites for even more space.
- Club level rooms
- How To Train Your Dragon Kids' Suites
- Universal Epic Universe View Rooms

## Recreation

- Zero-entry pool with hot tub and cabanas for rent
- Complimentary fitness center
- Game room (Fees apply).



ARTIST CONCEPTUAL RENDERING

## Dining at Universal Helios Grand Hotel

### Full service

- Flora Taverna - three meal, full-service dining and bar.\*\*
- Lotus Lagoon - pool bar.\*\*
- Bar Helios - rooftop bar\*\* with commanding views of Epic Universe.

### Quick service

- Aurora Market - contemporary grab & go spot in the lobby.

### And more

- Room Service—24 hours.

\*\*Must be 21+ with valid photo ID to purchase and consume alcoholic beverages. †, ††See back cover for details.

**EXCLUSIVE THEME  
PARK BENEFITS**

**FREE UNIVERSAL  
EXPRESS  
UNLIMITED<sup>^</sup>**

**EARLY PARK  
ADMISSION<sup>†</sup>**  
Separate theme park admission  
required; select attractions.

**FREE  
WATER TAXIS<sup>†</sup>  
AND SHUTTLES**

**RESORT-WIDE  
CHARGING  
PRIVILEGES**

**FREE  
MERCHANDISE  
DELIVERY**

**PRIORITY  
SEATING**



# LOEWS PORTOFINO BAY HOTEL

## SIGNATURE COLLECTION

**\$\$\$\$**

Beauty and charm  
inspired by the  
famed Mediterranean  
seaside village.

**INCLUDES FREE<sup>^</sup>  
UNIVERSAL EXPRESS  
UNLIMITED  
RIDE ACCESS**

A value of \$199.99  
per person, per day<sup>†</sup>

(Valid theme park admission required.)

## Accommodations

- 750 standard rooms and suites.
- Standard rooms feature two queen beds that sleep up to five with rollaway or one king bed that sleeps up to three with rollaway.<sup>††</sup>
- Select from multiple suites for even more space.
- Despicable Me themed kids' suites feature a separate kids' bedroom accessible only through the parents' room.

## Recreation

- Three beautiful pools, one offering a sandy shore and a waterslide, another with serene views and cabana rentals, and a third tucked away as a secluded retreat.
- Complimentary fitness center.

## Entertainment

- Musica della Notte—Live sunset serenade on the piazza featuring Italian Opera (weather permitting).
- Harbor Nights—A celebration of music, food and wine (Select nights; Fees apply).

## Dining

### Full service

- Mama Della's Ristorante™—Italian home cooking.
- Bice Ristorante—Elegant Italian cuisine.
- Trattoria del Porto™—Casual family fare.
- Splendido Bar & Grill™—Poolside bar\*\* serves specialty drinks, burgers, sandwiches and more.

### Quick service

- Sal's Market Deli™—Pizzas, sandwiches, salads.
- Gelateria—Enjoy artisan gelato, milkshakes, or smoothies.
- Caffè Espresso—Proudly offers Starbucks® Coffee, breakfast items, and pastries.

### And more

- The Thirsty Fish™—waterfront bar.\*\*
- Room Service—24 hours.

\*\*Must be 21+ with valid photo ID to purchase and consume alcoholic beverages. †, ††See back cover for details.

EXCLUSIVE THEME  
PARK BENEFITS

FREE UNIVERSAL  
EXPRESS  
UNLIMITED<sup>A</sup>

EARLY PARK  
ADMISSION<sup>\*</sup>  
Separate theme park admission  
required; select attractions.

FREE  
WATER TAXIS<sup>†</sup>  
AND SHUTTLES

RESORT-WIDE  
CHARGING  
PRIVILEGES

FREE  
MERCHANDISE  
DELIVERY

PRIORITY  
SEATING



# HARD ROCK HOTEL<sup>®</sup>

## SIGNATURE COLLECTION

\$\$\$\$

The coolest hotel on the planet. Live like a star and get treated like a celebrity with impeccable surroundings, laid-back attitude and show-stopping service.

**INCLUDES FREE  
UNIVERSAL EXPRESS  
UNLIMITED  
RIDE ACCESS<sup>A</sup>**

A value of \$199.99  
per person, per day<sup>†</sup>

(Valid theme park admission required.)

## Accommodations

- 650 standard rooms and suites.
- Standard rooms feature two queen beds that sleep up to five with rollaway.<sup>††</sup>
- Select from multiple suites for even more space.
- Future Rock Star themed kids' suites feature a separate kids' bedroom accessible only through the parents' room.

## Recreation

- Wide open pool, white-sand beach, underwater music, waterslide, cabana rentals, volleyball.
- Complimentary fitness center.
- Game room. (Fees apply)
- Sound of Your Stay program.

## Entertainment

- Velvet Sessions—Enjoy live music performed by real artists. (Concerts on select nights. Must be 21+. Fees apply.)

## Dining

### Full service

- The Kitchen—Awesome American classics.
- The Palm—Famous steak and seafood.
- beachclub—Poolside bar<sup>\*\*</sup> & grill.
- Velvet Bar—Sleek lobby level bar.<sup>\*\*</sup>

### Quick service

- Emack & Bolio's—Ice cream shop, Starbucks<sup>®</sup> coffee, snacks and grab and go.

### And more

- Room Service—24 hours.

<sup>\*\*</sup>Must be 21+ with valid photo ID to purchase and consume alcoholic beverages. <sup>†</sup>, <sup>††</sup>See back cover for details.

**EXCLUSIVE THEME  
PARK BENEFITS**

**FREE UNIVERSAL  
EXPRESS  
UNLIMITED<sup>^</sup>**

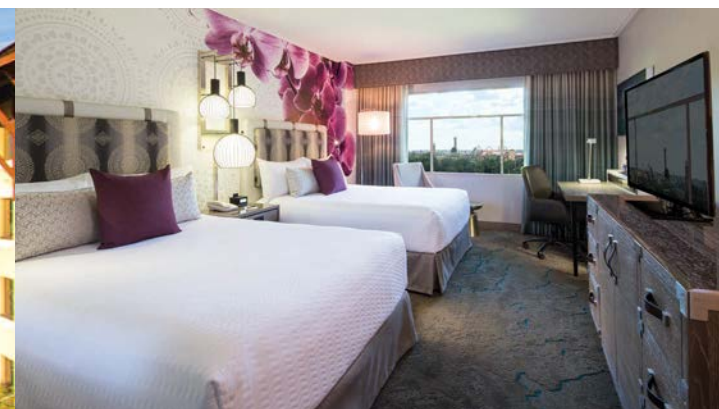
**EARLY PARK  
ADMISSION<sup>\*</sup>**  
Separate theme park admission  
required; select attractions.

**FREE  
WATER TAXIS<sup>1</sup>  
AND SHUTTLES**

**RESORT-WIDE  
CHARGING  
PRIVILEGES**

**FREE  
MERCHANDISE  
DELIVERY**

**PRIORITY  
SEATING**



# LOEWS ROYAL PACIFIC RESORT

## SIGNATURE COLLECTION

**\$\$\$\$**

Get swept away to a South  
Seas escape filled with  
tropical wonders and  
carefree fun.

**INCLUDES FREE  
UNIVERSAL EXPRESS  
UNLIMITED  
RIDE ACCESS<sup>^</sup>**

A value of \$199.99  
per person, per day<sup>\*</sup>

(Valid theme park admission required.)

## Accommodations

- 1,000 standard rooms and suites.
- Standard rooms feature two queen beds that sleep up to five with rollaway or one king bed that sleeps up to three with rollaway.<sup>††</sup>
- Select from multiple suites for even more space.
- Jurassic World themed kids' suites feature a separate kids' bedroom accessible only through the parents' room.

## Recreation

- Palm-tree lined lagoon-style pool, hot tubs, interactive water play area for kids, and cabana rentals.
- Complimentary fitness center.
- Game room. (Fees apply)

## Dining

### Full service

- Islands Dining Room—Mornings: breakfast favorites; Evenings: Pan Asian cuisine.
- Jake's American Bar—Full-service bar,<sup>\*\*</sup> fully flavorful menu from apps to entrees.
- Orchid Court Lounge & Sushi Bar—Evenings: sushi, martinis<sup>\*\*</sup> and more.
- Bula Bar & Grill—Poolside food with a tropical flair.

### Quick service

- Tuk Tuk Market—Lobby marketplace offering coffee, breakfast items, pastries, our exclusive Tuk Tarts, and other delights.

### And more

- Room Service—24 hours.

<sup>\*\*</sup>Must be 21+ with valid photo ID to purchase and consume alcoholic beverages. <sup>†</sup> <sup>††</sup>See back cover for details.

**EXCLUSIVE THEME  
PARK BENEFITS**

**EARLY PARK  
ADMISSION\***  
Separate theme park admission  
required; select attractions.

**FREE  
WATER TAXIS<sup>1</sup>  
AND SHUTTLES**

**RESORT-WIDE  
CHARGING  
PRIVILEGES**

**FREE  
MERCHANTISE  
DELIVERY**

**DEDICATED WALKING PATH TO  
UNIVERSAL VOLCANO BAY**



# LOEWS SAPPHIRE FALLS RESORT

## SIGNATURE COLLECTION

\$\$\$

This island-inspired escape gives guests a truly extraordinary Caribbean experience.

**DEDICATED WALKING  
PATH TO UNIVERSAL  
VOLCANO BAY**

Separate theme park admission  
required for park entry.

## Accommodations

- 1,000 standard rooms and suites.
- Standard rooms feature two queen beds that sleep up to five with rollaway or one king bed and a pull-out sofa that sleeps up to four.<sup>††</sup>
- Select from multiple suites for even more space, including kids' suites with a separate kids' bedroom accessible only through the parents' room.

## Recreation

- White-sand beach, zero-entry pool, hot tub, fire pit, kids' play area, and cabana rentals.
- Complimentary fitness center.
- Game room. (Fees apply)

## Dining

### Full service

- Amatista Cookhouse—Caribbean inspired cuisine.
- Strong Water Tavern—Tapas-style dining and rum bar.\*\*
- Drhum Club Kantine—Fresh seafood and more, poolside.

### Quick service

- New Dutch Trading Co.—Craft sandwiches, coffee, pastries.

### And more

- Room Service—24 hours.

\*\*Must be 21+ with valid photo ID to purchase and consume alcoholic beverages.

**EXCLUSIVE THEME  
PARK BENEFITS**

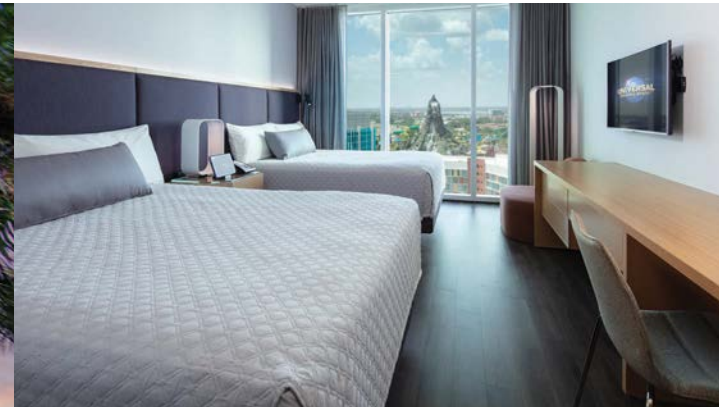
**EARLY PARK  
ADMISSION\***  
Separate theme park admission  
required; select attractions.

**FREE  
SHUTTLES**

**RESORT-WIDE  
CHARGING  
PRIVILEGES**

**FREE  
MERCHANDISE  
DELIVERY**

**DEDICATED WALKING PATH TO  
UNIVERSAL VOLCANO BAY**



# UNIVERSAL AVENTURA HOTEL

## PRIME VALUE HOTELS

**\$\$**

Sleek. Stylish.  
Just plain cool.

**DEDICATED WALKING  
PATH TO UNIVERSAL  
VOLCANO BAY**

## Accommodations

- 600 standard rooms and suites.
- Smart in-room technology with tablet controlled media, lights and more.
- Standard rooms feature two queen beds that sleep up to four or one king bed and a pull-out sofa that sleeps up to four.
- Kids' suites with a separate kids' sleeping area accessible only through the parents' room.
- Skyline View Rooms

## Recreation

- Pool, a splash zone for kids, a fire pit for fun after the sun.
- Complimentary fitness center.

## Dining

### Full service

- Bar 17 Bistro—Rooftop bar\*\* with small plates, cocktails and amazing views.

### Quick service

- Urban Pantry—Food hall with a variety of dining options with menus and flavors for every palate.

### And more

- Bar Sol—Convenient, carefree poolside escape.
- barVentura—Contemporary and inviting lobby bar.\*\*
- Starbucks®—Coffee and more in the lobby.
- Pizza—Delivered to your room.

Separate theme park admission  
required for park entry.

\*\*Must be 21+ with valid photo ID to purchase and consume alcoholic beverages.



**EXCLUSIVE THEME  
PARK BENEFITS**

**EARLY PARK  
ADMISSION\***

Separate theme park admission  
required; select attractions.

**FREE  
SHUTTLES**

**RESORT-WIDE  
CHARGING  
PRIVILEGES**

**FREE  
MERCHANTISE  
DELIVERY**

**DEDICATED WALKING PATH TO  
UNIVERSAL EPIC UNIVERSE**

Opening May 22, 2025

ARTIST CONCEPTUAL RENDERING



# UNIVERSAL STELLA NOVA RESORT



ARTIST CONCEPTUAL RENDERING

## PRIME VALUE HOTELS

\$\$

Inspired by the infinite vastness of the unknown universe, Stella Nova Resort, opening January 21, 2025, represents another galaxy.

It is located adjacent to the future site of the new Universal Epic Universe theme park, opening May 22, 2025.

**DEDICATED WALKING  
PATH TO UNIVERSAL EPIC  
UNIVERSE**

Separate theme park admission  
required for park entry.

## Accommodations

- 750 standard rooms.
- Standard rooms feature two queen beds that sleep up to four.
- Two-compartment, three fixture bathroom. Smart room technology for automated heating and air conditioning.

## Recreation

- Huge resort-style pool, kids' splash pad area, poolside movies at night (weather permitting), a fire pit, hot tub and outdoor games.
- Complimentary fitness center.
- Game room. (Fees apply)

\*\*Must be 21+ with valid photo ID to purchase and consume alcoholic beverages.

## Dining at Stella Nova Resort

### Quick service

- Cosmos Cafe and Market - grab & go and quick service outlet offering American classics like burgers, paninis, fried chicken and pastas.
- Galaxy Bar and Galaxy Grill - pool bar\*\* with burgers, salads, a full bar and more.

### And more

- Nova Bar - lobby bar\*\* offering custom crafted cocktails.
- Pizza Delivery - directly to your room.

## EXCLUSIVE THEME PARK BENEFITS

**EARLY PARK ADMISSION\***  
Separate theme park admission required; select attractions.

**FREE SHUTTLES**

**RESORT-WIDE CHARGING PRIVILEGES**

**FREE MERCHANDISE DELIVERY**

ARTIST CONCEPTUAL RENDERING

# UNIVERSAL TERRA LUNA RESORT

## PRIME VALUE HOTELS

### \$\$

Inspired by the thrill of exploring the unknown, Terra Luna Resort, opening March 25, 2025, represents another world.

It is located adjacent to the future site of the new Universal Epic Universe theme park, opening May 22, 2025.

Separate theme park admission required for park entry.

## Accommodations

- 750 standard rooms.
- Standard rooms feature two queen beds that sleep up to four.
- Two-compartment, three fixture bathroom. Smart room technology for automated heating and air conditioning.

## Recreation

- Zero entry resort style pool, with pop up jets, hot tub and outdoor fire pit.
- Complimentary fitness center.
- Game room. (Fees apply)

\*\*Must be 21+ with valid photo ID to purchase and consume alcoholic beverages.



ARTIST CONCEPTUAL RENDERING

## Dining at Terra Luna Resort

### Quick service

- Omega Cafe and Market - offering grab & go items, along with burgers, paninis, fried chicken, pastas and other American classics.
- Moonrise Bar and Moonrise Grill - pool bar\*\* with delicious sandwiches, a full bar and more.

### And more

- Luna Bar - specialty cocktails, wine and beer.\*\*
- Pizza Delivery - directly to your room.

**EXCLUSIVE THEME  
PARK BENEFITS**

**EARLY PARK  
ADMISSION\***  
Separate theme park admission  
required; select attractions.

**FREE  
SHUTTLES**

**RESORT-WIDE  
CHARGING  
PRIVILEGES**

**FREE  
MERCHANDISE  
DELIVERY**

**DEDICATED WALKING PATH TO  
UNIVERSAL VOLCANO BAY**



# UNIVERSAL CABANA BAY BEACH RESORT

## VALUE INNS AND SUITES

**\$\$**

Enjoy vibrant, retro style designed for fun and affordability.

### **DEDICATED WALKING PATH TO UNIVERSAL VOLCANO BAY**

Adjacent to Universal's water theme park

Separate theme park admission  
required for park entry.

## Accommodations

- 2,200 standard rooms and suites.
- Standard rooms feature two queen beds that sleep up to four.
- Family suites sleep up to six and include a kitchenette, pullout sofa and compartmentalized bathroom.
- 2-bedroom suites sleep up to eight and include a kitchenette, a pullout sofa and two full bathrooms.
- Volcano Bay View Rooms

## Recreation

- Two immense pools, one with a waterslide, one with a winding river, cabana rentals, kid-friendly areas, activities.
- Galaxy Bowl—10-lane bowling alley. (Fees apply)
- Complimentary fitness center.
- Game room. (Fees apply)

\*\*Must be 21+ with valid photo ID to purchase and consume alcoholic beverages.

## Dining

### Full service

- Galaxy Bowl Restaurant—American favorites: wings, pizza, and burgers, made-to-order.

### Quick service

- Bayliner Diner—Offers a selection of deli items, burgers, pizza, salad, desserts and more.
- Atomic Tonic—Poolside bar\*\* with sandwiches, wraps, salads and more.
- The Hideaway Bar & Grill—Poolside sandwiches, cocktails\*\* and more.

### And more

- Swizzle Lounge—The lobby's retro bar.\*\*
- Starbucks®—Coffee and more in the lobby.
- Delizioso Pizza—Pizzas, salads and dessert delivered to your room. (Available during limited hours)
- Shakes Malt Shoppe—smoothies, milkshakes, ice cream and more

**EXCLUSIVE THEME  
PARK BENEFITS**

**EARLY PARK  
ADMISSION\***  
Separate theme park admission  
required; select attractions.

**FREE  
SHUTTLES**

**RESORT-WIDE  
CHARGING  
PRIVILEGES**

**FREE  
MERCHANDISE  
DELIVERY**



# UNIVERSAL ENDLESS SUMMER RESORT - SURFSIDE INN AND SUITES

## VALUE INNS AND SUITES



Step into the surf lifestyle at this extra-affordable, free-spirited hotel.

### Accommodations

- 750 standard rooms and suites.
- Standard rooms feature two queen beds that sleep up to four.
- 2-bedroom suites sleep up to six and include a kitchenette, a cool picnic table for meals and compartmentalized bathroom.

### Recreation

- Surfboard-shaped pool with poolside activities.
- Complimentary fitness center.
- Game room. (Fees apply)

### Dining

#### Quick service

- Beach Break Cafe—A food court offering multiple stations with convenient and tasty options.

#### And more

- Sand Bar—Poolside bar\*\* offering frozen drinks, cocktails, wine and beer.
- Starbucks®—Coffee and more in the lobby.
- Pizza—Delivered to your room (available during limited hours).

\*\*Must be 21+ with valid photo ID to purchase and consume alcoholic beverages.

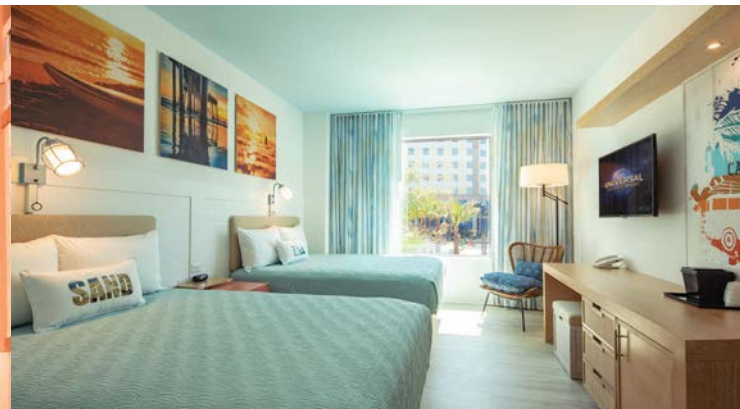
**EXCLUSIVE THEME  
PARK BENEFITS**

**EARLY PARK  
ADMISSION\***  
Separate theme park admission  
required; select attractions.

**FREE  
SHUTTLES**

**RESORT-WIDE  
CHARGING  
PRIVILEGES**

**FREE  
MERCHANDISE  
DELIVERY**



# UNIVERSAL ENDLESS SUMMER RESORT - DOCKSIDE INN AND SUITES

## VALUE INNS AND SUITES



Escape to the perfect sunset  
at this extra-affordable,  
fun and relaxing getaway.

### Accommodations

- 2,050 standard rooms and suites.
- Standard rooms feature two queen beds that sleep up to four.
- 2-bedroom suites sleep up to six and include a kitchenette, a cool picnic table for meals and compartmentalized bathroom.

### Recreation

- Two huge pools with poolside activities and a splash pad for kids.
- Complimentary fitness center.
- Game room. (Fees apply)

### Dining

#### Quick service

- Pier 8 Market—Food court offering multiple stations with convenient and tasty options.

#### And more

- The Oasis Beach Bar—A laid-back poolside bar.\*\*
- Wave Makers Pool Bar—Another great poolside watering hole.\*\*
- Starbucks®—Coffee and more in the lobby.
- Sunset Lounge—Lobby bar\*\* offering craft cocktails and beer.
- Pizza—Delivered to your room (available during limited hours).

\*\*Must be 21+ with valid photo ID to purchase and consume alcoholic beverages.



## **A NEW ADVENTURE EVERY DAY**

When you stay with Universal, it's just a hop between the adrenaline-pumping thrills of four amazing theme parks, Universal CityWalk and your hotel. Universal Islands of Adventure, Universal Studios Florida, Universal Volcano Bay, and Universal Epic Universe (opening May 22, 2025) offer days of endless awesome. Universal hotel guests enjoy more ride time, more fun time and more family time every day of your vacation.



ARTIST CONCEPTUAL RENDERING

## Contact Your Preferred Travel Professional

HARRY POTTER and all related characters and elements © & ™ Warner Bros. Entertainment Inc. Publishing Rights © J.K. Rowling.

\*Symbol/Universal Orlando hotel guests must present hotel key card and valid theme park admission; all other guests must show theme park ticket stating Early Park Admission benefit. Early Park Admission begins up to one (1) hour prior to regular scheduled park opening to: (a) Universal Studios Florida and/or Universal Islands of Adventure as determined by Universal Orlando; (b) Universal Volcano Bay (weather permitting); and/or (c) Universal Epic Universe (Early Park Admission at Epic Universe to begin 5/23/25). Valid at select attractions at each park. Park-to-Park admission required to board the Hogwarts™ Express. Benefit is non-transferable. Parks, attractions, operational times, and offerings for the Early Park Admission benefit may vary and are subject to substitutions, change, availability, capacity and/or cancellation without notice, and not guaranteed. Additional restrictions may apply. †Requires theme park admission. Valid only at participating rides and attractions in Universal Studios Florida and Universal Islands of Adventure, during normal theme park operating hours. Not valid at Universal Volcano Bay or at Universal Epic Universe. Excludes separately ticketed events. Benefit is non-transferable and valid only for guests of Loews Royal Pacific Resort, Hard Rock Hotel® and Loews Portofino Bay Hotel, for the number of guests staying in the room for the length of hotel stay. Express ride access is a separate line with a shorter wait time at participating rides and attractions. Present valid room key card to the attendant upon entering the queue for a participating ride and attraction. Parks, attractions, operational times, and benefits are subject to substitutions, change, availability, capacity and/or cancellation without notice, and not guaranteed. Additional restrictions may apply. †Based on the weighted average price of a 2-Park Universal Express Unlimited pass ranging between \$124.99 and \$389.99 per person. †† Floor plans may vary. Maximum occupancies may require a rollaway at \$35 plus tax per day. Only one rollaway is allowed per room. Available on a first-come, first-served basis. Additional charges apply for more than 2 adult guests per room. © 2024 UCF Hotel Venture V. UNIVERSAL TM & © Universal Studios. ENDLESS SUMMER registered trademarks, Bruce Brown Films, LLC. Aventura Hotel TM & © 2024 UCF Hotel Venture IV. Cabana Bay Beach Resort TM & © 2024 UCF Hotel Venture II. Sapphire Falls Resort TM & © 2024 UCF Hotel Venture III. Hard Rock Hotel® Hard Rock Cafe International (USA), Inc. Portofino Bay Hotel and Royal Pacific Resort TM & © 2024 UCF Hotel Venture. © 2024 Starbucks Coffee Company. How To Train Your Dragon © 2024 DreamWorks Animation LLC. Jurassic World franchise TM & © 2024 Universal City Studios LLC and Amblin Entertainment, Inc. Minions TM & © Universal Studios. Universal elements and all related indicia TM & © 2024 Universal Studios. All rights reserved. 24-UOR-3806019/AT